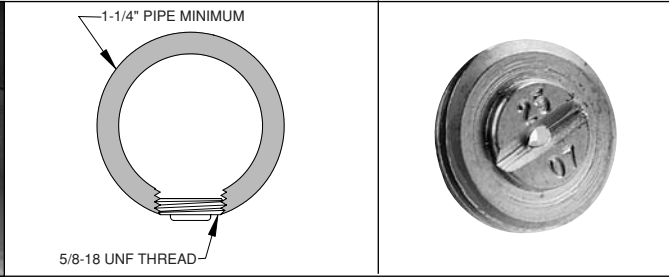
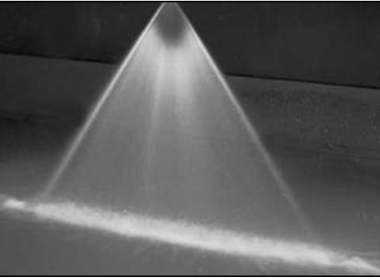


# STF SERIES

## Flat "V" spray nozzles



FLAT SPRAY

### SPRAY CHARACTERISTICS:

STF spray nozzles produce a flat, fan-shaped spray pattern, similar to the F Series. Spray angles are available for a 0° solid stream to 90°, measured at 3 bar. Spray angles generally increase with pressure, as shown in the capacity table below.

Spray density tapers off toward the outside edges of these sprays, to permit overlapping of spray patterns while maintaining uniform spray density.

### CONSTRUCTION:

The STF are disc-shaped, with a male 5/8-18 straight thread. They are machined from bar stock, and are one piece construction. Standard materials are 303 stainless steel and 316 stainless steel. Some models are also available in other materials.

### TYPICAL APPLICATIONS:

The STF series is designed for applications where space is at a minimum, or where the nozzles must not protrude from the header. Typically the outer surface of the nozzle is flush with the outside of the header.

(NOTE: Certain models will protrude slightly).

SPRAY ANGLE @ 3 bar	MODEL NUMBER	EQUIV. ORIFICE DIAMETER (mm)	CAPACITY (L/min) AT VARIOUS PRESSURES (bar)													SPRAY ANGLE @		
			0.7 bar	1 bar	1.5 bar	2 bar	2.5 bar	3 bar	4 bar	5 bar	6 bar	8 bar	11 bar	15 bar	20 bar	1.5 bar	3 bar	5 bar
0°	STF0003	1.04	0.57	0.68	0.84	0.97	1.08	1.18	1.37	1.53	1.67	1.93	2.27	2.65	3.06	0°	0°	0°
	STF0007	1.57	1.33	1.60	1.95	2.26	2.52	2.76	3.2	3.6	3.9	4.5	5.3	6.2	7.1	0°	0°	0°
25°	STF2507	1.57	1.33	1.60	1.95	2.26	2.52	2.76	3.2	3.6	3.9	4.5	5.3	6.2	7.1	19°	25°	26°
50°	STF50084	1.73	1.60	1.91	2.34	2.71	3.03	3.3	3.8	4.3	4.7	5.4	6.3	7.4	8.6	42°	50°	57°
	STF5013	2.16	2.48	2.96	3.6	4.2	4.7	5.1	5.9	6.6	7.3	8.4	9.8	11.5	13.2	44°	50°	56°
	STF5019	2.59	3.6	4.3	5.3	6.1	6.8	7.5	8.7	9.7	10.6	12.2	14.4	16.8	19.4	45°	50°	54°
60°	STF6003	1.04	0.57	0.68	0.84	0.97	1.08	1.18	1.37	1.53	1.67	1.93	2.27	2.65	3.06	50°	60°	65°
	STF50054	1.40	1.03	1.23	1.51	1.74	1.95	2.13	2.46	2.75	3.01	3.5	4.1	4.8	5.5	52°	60°	64°
	STF60093	1.83	1.77	2.12	2.60	3.00	3.4	3.7	4.2	4.7	5.2	6.0	7.0	8.2	9.5	56°	60°	66°
	STF6013	2.16	2.48	2.96	3.6	4.2	4.7	5.1	5.9	6.6	7.3	8.4	9.8	11.5	13.2	55°	60°	64°
	STF6020	2.67	3.8	4.6	5.6	6.4	7.2	7.9	9.1	10.2	11.2	12.9	14.4	17.7	20.4	55°	60°	63°
	STF6024	2.92	4.6	5.5	6.7	7.7	8.6	9.5	10.9	12.2	13.4	15.5	18.1	21.2	24.5	58°	60°	66°
	STF6033	3.43	6.3	7.5	9.2	10.6	11.9	13.0	15.0	16.8	18.4	21.3	24.9	29.1	34	58°	60°	64°
	STF6040	3.76	7.6	9.1	11.2	12.9	14.4	15.8	18.2	20.4	22.3	25.8	30.2	35	41	57°	60°	62°
	STF6047	4.09	9.0	10.7	13.1	15.1	16.9	18.6	21.4	23.9	26.2	30.3	36	41	48	58°	60°	62°
STF6088	5.59	16.8	20.1	24.6	28.4	32	35	40	45	49	57	67	78	90	58°	60°	62°	
65°	STF65054	1.40	1.03	1.23	1.51	1.74	1.95	2.13	2.46	2.75	3.01	3.5	4.1	4.8	5.5	55°	65°	72°
	STF6513	2.16	2.48	2.96	3.6	4.2	4.7	5.1	5.9	6.6	7.3	8.4	9.8	11.5	13.2	57°	65°	70°
	STF6519	2.59	3.6	4.3	5.3	6.1	6.8	7.5	8.7	9.7	10.6	12.2	14.4	16.8	19.4	60°	65°	69°
	STF6520	2.67	3.8	4.6	5.6	6.4	7.2	7.9	9.1	10.2	11.2	12.9	15.1	17.7	20.4	62°	65°	69°
	STF6524	2.92	4.6	5.5	6.7	7.7	8.6	9.5	10.9	12.2	13.4	15.5	18.1	21.2	24.5	62°	65°	67°
	STF6588	5.59	16.8	20.1	24.6	28.4	32	35	40	45	49	57	67	78	90	61°	65°	69°
68°	STF6824	2.92	4.6	5.5	6.7	7.7	8.6	9.5	10.9	12.2	13.4	15.5	18.1	21.2	24.5	65°	68°	70°
80°	STF8004	1.19	0.76	0.91	1.12	1.29	1.44	1.58	1.82	2.04	2.23	2.58	3.02	3.5	4.1	75°	80°	84°
	STF80054	1.40	1.03	1.23	1.51	1.74	1.95	2.13	2.46	2.75	3.01	3.5	4.1	4.8	5.5	72°	80°	87°
	STF80084	1.73	1.56	1.87	2.29	2.64	2.95	3.2	3.7	4.2	4.6	5.3	6.2	7.2	8.4	76°	80°	84°
	STF80093	1.83	1.77	2.12	2.60	3.00	3.4	3.7	4.2	4.7	5.2	6.0	7.0	8.2	9.5	74°	80°	84°
	STF8010	1.88	1.91	2.28	2.79	3.2	3.6	3.9	4.6	5.1	5.6	6.4	7.6	8.8	10.2	75°	80°	86°
	STF8013	2.16	2.48	2.96	3.6	4.2	4.7	5.1	5.9	6.6	7.3	8.4	9.8	11.5	13.2	76°	80°	85°
	STF8024	2.92	4.6	5.5	6.7	7.7	8.6	9.5	10.9	12.2	13.4	15.5	18.1	21.2	24.5	75°	80°	83°
	STF8033	3.43	6.3	7.5	9.2	10.6	11.9	13.0	15.0	16.8	18.4	21.3	24.9	29.1	34	76°	80°	82°
90°	STF90054	1.40	1.03	1.23	1.51	1.74	1.95	2.13	2.46	2.75	3.01	3.5	4.1	4.8	5.5	82°	90°	96°
	STF90093	1.83	1.77	2.12	2.60	3.00	3.4	3.7	4.2	4.7	5.2	6.0	7.0	8.2	9.5	83°	90°	95°
	STF9013	2.16	2.48	2.96	3.6	4.2	4.7	5.1	5.9	6.6	7.3	8.4	9.8	11.5	13.2	85°	90°	93°