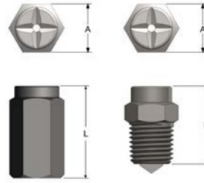
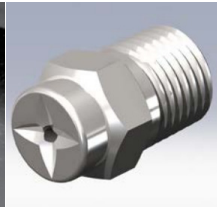
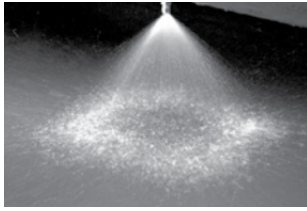


# Threaded Nozzles – Full Cone Series SQ



Model	Dim. A (mm)	Dim. L (mm)
1/8SQ	11 HEX	21
1/4SQ	14 HEX	24
3/8SQ	17 HEX	29
1/2SQ	22 HEX	33
3/4SQ	27 HEX	52
1FSQ	38 dia.	67
1 1/4FSQ	48 dia.	89
1 1/2FSQ	57 dia.	108
2FSQ	70 dia.	138
2 1/2FSQ	89 dia.	175

## SPRAY CHARACTERISTICS:

Full cone spray pattern, with uniform distribution throughout the approximately square cone.

## TYPICAL APPLICATIONS:

- Chemical Processing
- Cooling Sprays
- Continuous Casting

## CONSTRUCTION:

Standard materials are brass, 303 and 316 stainless. Larger sizes in cast 316 or 303 stainless bar. Some models are also stocked in plastics and other materials. Please see page 30 for molded plastic models.

"SQ" one piece body		Thread BSPT	MAXIMUM FREE PASSAGE (mm)	CAPACITY (L/min) AT VARIOUS PRESSURES (bar)											Spray Angle @		
Female	Male			0.3 bar	0.5 bar	0.7 bar	1 bar	1.5 bar	2 bar	3 bar	4 bar	5 bar	6 bar	8 bar	0.5 bar	1.5 bar	5 bar
	1/8 S3.6SQ	1/8"	1.45	--	1.16	1.37	1.64	2.01	2.32	2.84	3.3	3.7	4	4.6	42°	55°	50°
	1/8 S4.8SQ	1/8"	1.63	--	1.55	1.83	2.19	2.68	3.09	3.8	4.4	4.9	5.4	6.2	50°	65°	60°
	1/8 S6SQ	1/8"	2.06	--	1.93	2.29	2.73	3.3	3.9	4.7	5.5	6.1	6.7	7.7	30°	65°	60°
	1/4 S6SQ	1/4"	2.06	1.5	1.93	2.29	2.73	3.3	3.9	4.7	5.5	6.1	6.7	7.7	60°	65°	60°
	1/4 S10SQ	1/4"	2.31	2.5	3.2	3.8	4.6	5.6	6.4	7.9	9.1	10.2	11.2	12.9	61°	67°	60°
	1/4 S12SQ	1/4"	2.31	3	3.9	4.6	5.5	6.7	7.7	9.5	10.9	12.2	13.4	15.5	71°	76°	69°
	1/4 S14SQ	1/4"	2.31	3.5	4.5	5.3	6.4	7.8	9	11.1	12.8	14.3	15.6	18	78°	85°	75°
	3/8 S18SQ	3/8"	2.59	4.5	5.8	6.9	8.2	10	11.6	14.2	16.4	18.3	20.1	23.2	70°	75°	68°
	1/2 S29SQ	1/2"	3.66	7.2	9.3	11.1	13.2	16.2	18.7	22.9	26.4	29.6	32	37	70°	75°	68°
	1/2 S36SQ	1/2"	3.66	9	11.6	13.7	16.4	20.1	23.2	28.4	33	37	40	46	80°	85°	77°
	3/4 S50SQ	3/4"	4.95	12.5	16.1	19.1	22.8	27.9	32	39	46	51	56	64	70°	75°	68°
	1FS106SQ	1"	5.56	26.5	34	40	48	59	68	84	97	108	118	137	77°	80°	72°
	1 1/4FS177SQ	1 1/4"	6.6	44	57	67	81	99	114	140	161	180	198	228	77°	80°	72°
	1 1/2FS230SQ	1 1/2"	9.96	57	74	88	105	128	148	182	210	234	257	296	74°	79°	72°
	2FS290SQ	2"	11.13	72	93	111	132	162	187	229	264	296	324	374	65°	70°	65°
	2FS360SQ	2"	11.13	90	116	137	164	201	232	284	328	367	402	464	70°	75°	70°
	2FS480SQ	2"	11.13	120	155	183	219	268	309	379	438	489	536	619	78°	80°	76°
	2 1/2FS590SQ	2 1/2"	13.49	147	190	225	269	329	380	466	538	601	659	761	75°	80°	73°