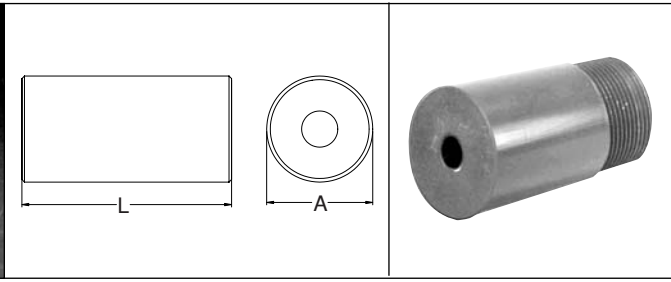
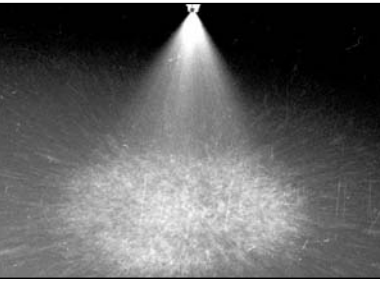


# PS & PSW SERIES Plastic full cone spray nozzles



## DIMENSIONS

| FEMALE FPS (BSPT) | Dim. A (mm) | Dim. L (mm) | MALE PS (BSPT) | Dim. A (mm) | Dim. L (mm) |
|-------------------|-------------|-------------|----------------|-------------|-------------|
| 1 1/4 FPS         | 51          | 83          | 1 1/4 PS       | 45          | 76          |
| 1 1/2 FPS         | 64          | 108         | 1 1/2 PS       | 51          | 102         |
| 2 FPS             | 76          | 149         | 2 PS           | 64          | 105         |
| 2 1/2 FPS         | 89          | 149         | 2 1/2 PS       | 76          | 114         |
| 3 FPS             | 102         | 149         | 3 PS           | 89          | 140         |

### SPRAY CHARACTERISTICS:

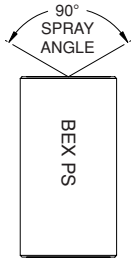
A full cone spray pattern with large flow capacities. Spray angle is 90° (included angle). Other sizes and spray angles available upon request.

### CONSTRUCTION:

The models listed are machined from plastic and consist of a body plus a non-removable insert. Standard materials are PVC, CPVC and polypropylene.

### TYPICAL APPLICATIONS:

- Scrubbing and Pollution Control
- Rinsing and Cooling



| MODEL NUMBER |             | PIPE SIZE BSPT | MAXIMUM FREE PASSAGE (mm) | CAPACITY (L/min) AT VARIOUS PRESSURES (bar) |         |         |         |         |       |       |       |       |
|--------------|-------------|----------------|---------------------------|---|---------|---------|---------|---------|-------|-------|-------|-------|
| FEMALE       | MALE        |                |                           | 0.2 bar                                     | 0.3 bar | 0.5 bar | 0.7 bar | 1.5 bar | 3 bar | 4 bar | 5 bar | 6 bar |
| 1 1/4 FPS17  | 1 1/4 PS17  | 1 1/4          | 6.4                       | 35  | 42      | 55      | 65      | 95      | 134   | 155   | 173   | 190   |
| 1 1/4 FPS20  | 1 1/4 PS20  | 1 1/4          | 6.4                       | 41  | 50      | 64      | 76      | 112     | 158   | 182   | 204   | 223   |
| 1 1/2 FPS17  | 1 1/2 PS17  | 1 1/2          | 6.4                       | 35  | 42      | 55      | 65      | 95      | 134   | 155   | 173   | 190   |
| 1 1/2 FPS19  | 1 1/2 PS19  | 1 1/2          | 6.4                       | 39  | 47      | 61      | 72      | 106     | 150   | 173   | 194   | 212   |
| 1 1/2 FPS21  | 1 1/2 PS21  | 1 1/2          | 6.4                       | 43  | 52      | 68      | 80      | 117     | 166   | 191   | 214   | 234   |
| 1 1/2 FPS25  | 1 1/2 PS25  | 1 1/2          | 7.9                       | 51  | 62      | 81      | 95      | 140     | 197   | 228   | 255   | 279   |
| 1 1/2 FPS29  | 1 1/2 PS29  | 1 1/2          | 7.9                       | 59  | 72      | 93      | 111     | 162     | 229   | 264   | 296   | 324   |
| 2 FPS20      | 2 PS20      | 2              | 6.4                       | 41  | 50      | 64      | 76      | 112     | 158   | 182   | 204   | 223   |
| 2 FPS25      | 2 PS25      | 2              | 7.9                       | 51  | 62      | 81      | 95      | 140     | 197   | 228   | 255   | 279   |
| 2 FPS32      | 2 PS32      | 2              | 7.9                       | 65  | 80      | 103     | 122     | 179     | 253   | 292   | 326   | 357   |
| 2 FPS40      | 2 PS40      | 2              | 9.5                       | 82  | 100     | 129     | 153     | 223     | 316   | 365   | 408   | 447   |
| 2 FPS48      | 2 PS48      | 2              | 9.5                       | 98  | 120     | 155     | 183     | 268     | 379   | 438   | 489   | 536   |
| 2 FPS55      | 2 PS55      | 2              | 13.5                      | 112   | 137     | 177     | 210     | 307     | 434   | 501   | 561   | 614   |
| 2 FPS60      | 2 PS60      | 2              | 13.5                      | 122   | 150     | 193     | 229     | 335     | 474   | 547   | 611   | 670   |
| 2 FPS72      | 2 PS72      | 2              | 14.3                      | 147   | 180     | 232     | 275     | 402     | 568   | 656   | 734   | 804   |
| 2 FPS76      | 2 PS76      | 2              | 14.3                      | 155   | 190     | 245     | 290     | 424     | 600   | 693   | 775   | 848   |
| 2 FPS84      | 2 PS84      | 2              | 15.9                      | 171   | 210     | 271     | 320     | 469     | 663   | 766   | 856   | 938   |
| 2 1/2 FPS84  | 2 1/2 PS84  | 2 1/2          | 15.9                      | 171   | 210     | 271     | 320     | 469     | 663   | 766   | 856   | 938   |
| 2 1/2 FPS96  | 2 1/2 PS96  | 2 1/2          | 17.5                      | 196   | 240     | 309     | 366     | 536     | 758   | 875   | 978   | 1072  |
| 2 1/2 FPS108 | 2 1/2 PS108 | 2 1/2          | 17.5                      | 220   | 270     | 348     | 412     | 603     | 853   | 984   | 1101  | 1206  |
| 3 FPS70      | 3 PS70      | 3              | 14.3                      | 38  | 175     | 226     | 267     | 391     | 553   | 638   | 713   | 781   |
| 3 FPS100     | 3 PS100     | 3              | 17.5                      | 204   | 250     | 322     | 381     | 558     | 789   | 912   | 1019  | 1116  |
| 3 FPS115     | 3 PS115     | 3              | 17.5                      | 234   | 287     | 371     | 439     | 642     | 908   | 1048  | 1172  | 1284  |
| 3 FPS140     | 3 PS140     | 3              | 20.6                      | 285   | 349     | 451     | 534     | 781     | 1105  | 1276  | 1427  | 1563  |

FULL CONE SPRAY

## Plastic wide angle full cone spray nozzles

### SPRAY CHARACTERISTICS:

A full cone spray pattern with large flow capacities. Similar to the PS series above, but with a wider spray angle of 120° (included angle). Other sizes and spray angles available upon request.

### CONSTRUCTION:

The models listed are machined from plastic and consist of a body plus a non-removable

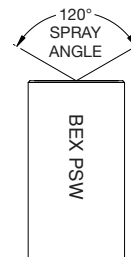
insert. Standard materials are PVC, CPVC and polypropylene.

### DIMENSIONS:

Same as PS series (above).

### TYPICAL APPLICATIONS:

Same as PS series, but where a wider spray coverage is required.



**SAME CAPACITIES AS PS SERIES (above). ADD "W" AT THE END OF THE MODEL NUMBER FOR WIDE ANGLE WHEN ORDERING (IE: 2FPS40W).**