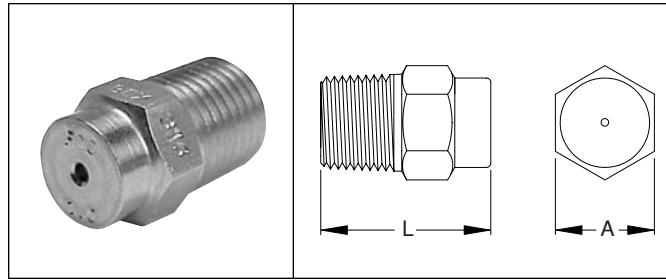


Solid stream spray nozzles

F SERIES

DIMENSIONS

NOZZLE BSPT PIPE SIZE	Length L (mm)	Dim. A (mm)
1/8F	20.6	11 HEX
1/4F	23.8	14 HEX
3/8F	30.2	17 HEX
1/2F	33.3	22 HEX
3/4F	42.8	27 HEX
1F	63.5	35 HEX
1 1/4F	92	44.5 HEX
1 1/2F	114.3	50.8 Dia.
2F	127	60.3 Dia.



SPRAY CHARACTERISTICS:

A high impact solid stream. For situations where maximum impact is required over a very small target area:

- Metal Wash
- Agitation
- Mixing

CONSTRUCTION:

The models listed are machined from bar stock, and are one piece construction. Standard materials are brass, steel, 303 stainless steel and 316 stainless steel.

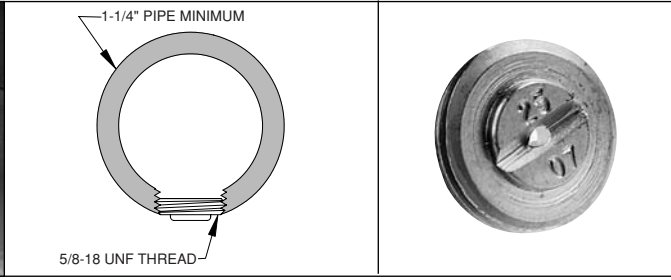
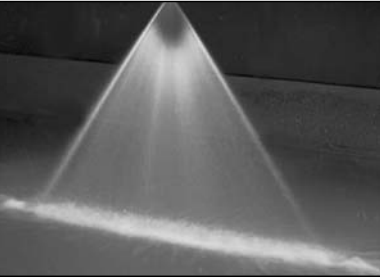
For molded plastic models, please see page 20.

FLAT SPRAY

SPRAY ANGLE @ 3 bar	MODEL NUMBER	PIPE SIZE BSPT	EQUIV. ORIFICE DIAMETER (mm)	CAPACITY (L/min) AT VARIOUS PRESSURES (bar)														SPRAY ANGLE @		
				0.3 bar	0.5 bar	0.7 bar	1 bar	1.5 bar	2 bar	3 bar	4 bar	5 bar	7 bar	10 bar	20 bar	30 bar	1.5 bar	3 bar	5 bar	
0°	1/8F0003	1/8	1.04	0.37	0.48	0.57	0.68	0.84	0.97	1.18	1.37	1.53	1.81	2.16	3.06	3.74	0° Solid Stream			
	1/4F0003	1/4	1.04	0.37	0.48	0.57	0.68	0.84	0.97	1.18	1.37	1.53	1.81	2.16	3.06	3.74				
	1/8F0004	1/8	1.19	0.50	0.64	0.76	0.91	1.12	1.29	1.58	1.82	2.04	2.41	2.88	4.08	4.99				
	1/4F0004	1/4	1.19	0.50	0.64	0.76	0.91	1.12	1.29	1.58	1.82	2.04	2.41	2.88	4.08	4.99				
	1/8F0005	1/8	1.35	0.62	0.81	0.95	1.14	1.40	1.61	1.97	2.28	2.55	3.01	3.60	5.10	6.24				
	1/4F0005	1/4	1.35	0.62	0.81	0.95	1.14	1.40	1.61	1.97	2.28	2.55	3.01	3.60	5.10	6.24				
	1/8F0006	1/8	1.47	0.75	0.97	1.14	1.37	1.67	1.93	2.37	2.73	3.06	3.62	4.32	6.11	7.5				
	1/4F0006	1/4	1.47	0.75	0.97	1.14	1.37	1.67	1.93	2.37	2.73	3.06	3.62	4.32	6.11	7.5				
	1/8F0008	1/8	1.70	1.00	1.29	1.53	1.82	2.23	2.58	3.16	3.65	4.08	4.82	5.8	8.2	10.0				
	1/4F0008	1/4	1.70	1.00	1.29	1.53	1.82	2.23	2.58	3.16	3.65	4.08	4.82	5.8	8.2	10.0				
	1/8F0010	1/8	1.91	1.25	1.61	1.91	2.28	2.79	3.22	3.95	4.56	5.10	6.0	7.2	10.2	12.5				
	1/4F0010	1/4	1.91	1.25	1.61	1.91	2.28	2.79	3.22	3.95	4.56	5.10	6.0	7.2	10.2	12.5				
	1/8F0015	1/8	2.31	1.87	2.42	2.86	3.42	4.19	4.83	5.92	6.8	7.6	9.0	10.8	15.3	18.7				
	1/4F0015	1/4	2.31	1.87	2.42	2.86	3.42	4.19	4.83	5.92	6.8	7.6	9.0	10.8	15.3	18.7				
	1/8F0020	1/8	2.67	2.50	3.22	3.81	4.56	5.58	6.4	7.9	9.1	10.2	12.1	14.4	20.4	25.0				
	1/4F0020	1/4	2.67	2.50	3.22	3.81	4.56	5.58	6.4	7.9	9.1	10.2	12.1	14.4	20.4	25.0				
	1/8F0030	1/8	3.28	3.74	4.83	5.72	6.8	8.4	9.7	11.8	13.7	15.3	18.1	21.6	30.6	37.4				
	1/4F0030	1/4	3.28	3.74	4.83	5.72	6.8	8.4	9.7	11.8	13.7	15.3	18.1	21.6	30.6	37.4				
	1/8F0040	1/8	3.78	4.99	6.45	7.6	9.1	11.2	12.9	15.8	18.2	20.4	24.1	28.8	40.8	49.9				
	1/4F0040	1/4	3.78	4.99	6.45	7.6	9.1	11.2	12.9	15.8	18.2	20.4	24.1	28.8	40.8	49.9				
3/8F0040	3/8	3.78	4.99	6.45	7.6	9.1	11.2	12.9	15.8	18.2	20.4	24.1	28.8	40.8	49.9					
1/4F0050	1/4	4.24	6.24	8.1	9.5	11.4	14.0	16.1	19.7	22.8	25.5	30.1	36.0	51.0	62.4					
3/8F0050	3/8	4.24	6.24	8.1	9.5	11.4	14.0	16.1	19.7	22.8	25.5	30.1	36.0	51.0	62.4					
1/4F0060	1/4	4.62	7.5	9.7	11.4	13.7	16.7	19.3	23.7	27.3	30.6	36.2	43.2	61.1	75					
3/8F0060	3/8	4.62	7.5	9.7	11.4	13.7	16.7	19.3	23.7	27.3	30.6	36.2	43.2	61.1	75					
1/4F0070	1/4	5.00	8.7	11.3	13.3	16.0	19.5	22.6	27.6	31.9	35.7	42.2	50.4	71	87					
3/8F0070	3/8	5.00	8.7	11.3	13.3	16.0	19.5	22.6	27.6	31.9	35.7	42.2	50.4	71	87					
1/4F0080	1/4	5.36	10.0	12.9	15.3	18.2	22.3	25.8	31.6	36.5	40.8	48.2	58	82	100					
3/8F0080	3/8	5.36	10.0	12.9	15.3	18.2	22.3	25.8	31.6	36.5	40.8	48.2	58	82	100					
3/8F00100	3/8	5.99	12.5	16.1	19.1	22.8	27.9	32.2	39.5	45.6	51.0	60	72	102	125					
3/8F00120	3/8	6.55	15.0	19.3	22.9	27.3	33.5	38.7	47.4	54.7	61.1	72	86	122	150					
1/2F00120	1/2	6.55	15.0	19.3	22.9	27.3	33.5	38.7	47.4	54.7	61.1	72	86	122	150					
1/2F00150	1/2	7.34	18.7	24.2	28.6	34.2	41.9	48.3	59.2	68	76	90	108	153	187					
1/2F00200	1/2	8.46	25.0	32.2	38.1	45.6	55.8	64	79	91	102	121	144	204	250					
3/4F00250	3/4	9.47	31.2	40.3	47.7	57.0	70	81	99	114	127	151	180	255	312					
3/4F00350	3/4	11.20	43.7	56.4	66.7	80	9.8	113	138	160	178	211	252	357	437					
3/4F00400	3/4	11.96	49.9	64.5	76	91	112	129	158	182	204	241	288	408	499					
3/4F00500	3/4	13.39	62.4	81	95	114	140	161	197	228	255	301	360	510	624					
3/4F00700	3/4	15.82	87	113	133	160	195	226	276	319	357	422	504	713	874					
1F001000	1	18.92	125	161	191	228	279	322	395	456	510	603	721	1019	1248					

STF SERIES

Flat "V" spray nozzles



FLAT SPRAY

SPRAY CHARACTERISTICS:

STF spray nozzles produce a flat, fan-shaped spray pattern, similar to the F Series. Spray angles are available for a 0° solid stream to 90°, measured at 3 bar. Spray angles generally increase with pressure, as shown in the capacity table below.

Spray density tapers off toward the outside edges of these sprays, to permit overlapping of spray patterns while maintaining uniform spray density.

CONSTRUCTION:

The STF are disc-shaped, with a male 5/8-18 straight thread. They are machined from bar stock, and are one piece construction. Standard materials are 303 stainless steel and 316 stainless steel. Some models are also available in other materials.

TYPICAL APPLICATIONS:

The STF series is designed for applications where space is at a minimum, or where the nozzles must not protrude from the header. Typically the outer surface of the nozzle is flush with the outside of the header.

(NOTE: Certain models will protrude slightly).

SPRAY ANGLE @ 3 bar	MODEL NUMBER	EQUIV. ORIFICE DIAMETER (mm)	CAPACITY (L/min) AT VARIOUS PRESSURES (bar)													SPRAY ANGLE @		
			0.7 bar	1 bar	1.5 bar	2 bar	2.5 bar	3 bar	4 bar	5 bar	6 bar	8 bar	11 bar	15 bar	20 bar	1.5 bar	3 bar	5 bar
0°	STF0003	1.04	0.57	0.68	0.84	0.97	1.08	1.18	1.37	1.53	1.67	1.93	2.27	2.65	3.06	0°	0°	0°
	STF0007	1.57	1.33	1.60	1.95	2.26	2.52	2.76	3.2	3.6	3.9	4.5	5.3	6.2	7.1	0°	0°	0°
25°	STF2507	1.57	1.33	1.60	1.95	2.26	2.52	2.76	3.2	3.6	3.9	4.5	5.3	6.2	7.1	19°	25°	26°
50°	STF50084	1.73	1.60	1.91	2.34	2.71	3.03	3.3	3.8	4.3	4.7	5.4	6.3	7.4	8.6	42°	50°	57°
	STF5013	2.16	2.48	2.96	3.6	4.2	4.7	5.1	5.9	6.6	7.3	8.4	9.8	11.5	13.2	44°	50°	56°
	STF5019	2.59	3.6	4.3	5.3	6.1	6.8	7.5	8.7	9.7	10.6	12.2	14.4	16.8	19.4	45°	50°	54°
60°	STF6003	1.04	0.57	0.68	0.84	0.97	1.08	1.18	1.37	1.53	1.67	1.93	2.27	2.65	3.06	50°	60°	65°
	STF50054	1.40	1.03	1.23	1.51	1.74	1.95	2.13	2.46	2.75	3.01	3.5	4.1	4.8	5.5	52°	60°	64°
	STF60093	1.83	1.77	2.12	2.60	3.00	3.4	3.7	4.2	4.7	5.2	6.0	7.0	8.2	9.5	56°	60°	66°
	STF6013	2.16	2.48	2.96	3.6	4.2	4.7	5.1	5.9	6.6	7.3	8.4	9.8	11.5	13.2	55°	60°	64°
	STF6020	2.67	3.8	4.6	5.6	6.4	7.2	7.9	9.1	10.2	11.2	12.9	14.4	17.7	20.4	55°	60°	63°
	STF6024	2.92	4.6	5.5	6.7	7.7	8.6	9.5	10.9	12.2	13.4	15.5	18.1	21.2	24.5	58°	60°	66°
	STF6033	3.43	6.3	7.5	9.2	10.6	11.9	13.0	15.0	16.8	18.4	21.3	24.9	29.1	34	58°	60°	64°
	STF6040	3.76	7.6	9.1	11.2	12.9	14.4	15.8	18.2	20.4	22.3	25.8	30.2	35	41	57°	60°	62°
	STF6047	4.09	9.0	10.7	13.1	15.1	16.9	18.6	21.4	23.9	26.2	30.3	36	41	48	58°	60°	62°
STF6088	5.59	16.8	20.1	24.6	28.4	32	35	40	45	49	57	67	78	90	58°	60°	62°	
65°	STF65054	1.40	1.03	1.23	1.51	1.74	1.95	2.13	2.46	2.75	3.01	3.5	4.1	4.8	5.5	55°	65°	72°
	STF6513	2.16	2.48	2.96	3.6	4.2	4.7	5.1	5.9	6.6	7.3	8.4	9.8	11.5	13.2	57°	65°	70°
	STF6519	2.59	3.6	4.3	5.3	6.1	6.8	7.5	8.7	9.7	10.6	12.2	14.4	16.8	19.4	60°	65°	69°
	STF6520	2.67	3.8	4.6	5.6	6.4	7.2	7.9	9.1	10.2	11.2	12.9	15.1	17.7	20.4	62°	65°	69°
	STF6524	2.92	4.6	5.5	6.7	7.7	8.6	9.5	10.9	12.2	13.4	15.5	18.1	21.2	24.5	62°	65°	67°
	STF6588	5.59	16.8	20.1	24.6	28.4	32	35	40	45	49	57	67	78	90	61°	65°	69°
68°	STF6824	2.92	4.6	5.5	6.7	7.7	8.6	9.5	10.9	12.2	13.4	15.5	18.1	21.2	24.5	65°	68°	70°
80°	STF8004	1.19	0.76	0.91	1.12	1.29	1.44	1.58	1.82	2.04	2.23	2.58	3.02	3.5	4.1	75°	80°	84°
	STF80054	1.40	1.03	1.23	1.51	1.74	1.95	2.13	2.46	2.75	3.01	3.5	4.1	4.8	5.5	72°	80°	87°
	STF80084	1.73	1.56	1.87	2.29	2.64	2.95	3.2	3.7	4.2	4.6	5.3	6.2	7.2	8.4	76°	80°	84°
	STF80093	1.83	1.77	2.12	2.60	3.00	3.4	3.7	4.2	4.7	5.2	6.0	7.0	8.2	9.5	74°	80°	84°
	STF8010	1.88	1.91	2.28	2.79	3.2	3.6	3.9	4.6	5.1	5.6	6.4	7.6	8.8	10.2	75°	80°	86°
	STF8013	2.16	2.48	2.96	3.6	4.2	4.7	5.1	5.9	6.6	7.3	8.4	9.8	11.5	13.2	76°	80°	85°
	STF8024	2.92	4.6	5.5	6.7	7.7	8.6	9.5	10.9	12.2	13.4	15.5	18.1	21.2	24.5	75°	80°	83°
	STF8033	3.43	6.3	7.5	9.2	10.6	11.9	13.0	15.0	16.8	18.4	21.3	24.9	29.1	34	76°	80°	82°
90°	STF90054	1.40	1.03	1.23	1.51	1.74	1.95	2.13	2.46	2.75	3.01	3.5	4.1	4.8	5.5	82°	90°	96°
	STF90093	1.83	1.77	2.12	2.60	3.00	3.4	3.7	4.2	4.7	5.2	6.0	7.0	8.2	9.5	83°	90°	95°
	STF9013	2.16	2.48	2.96	3.6	4.2	4.7	5.1	5.9	6.6	7.3	8.4	9.8	11.5	13.2	85°	90°	93°